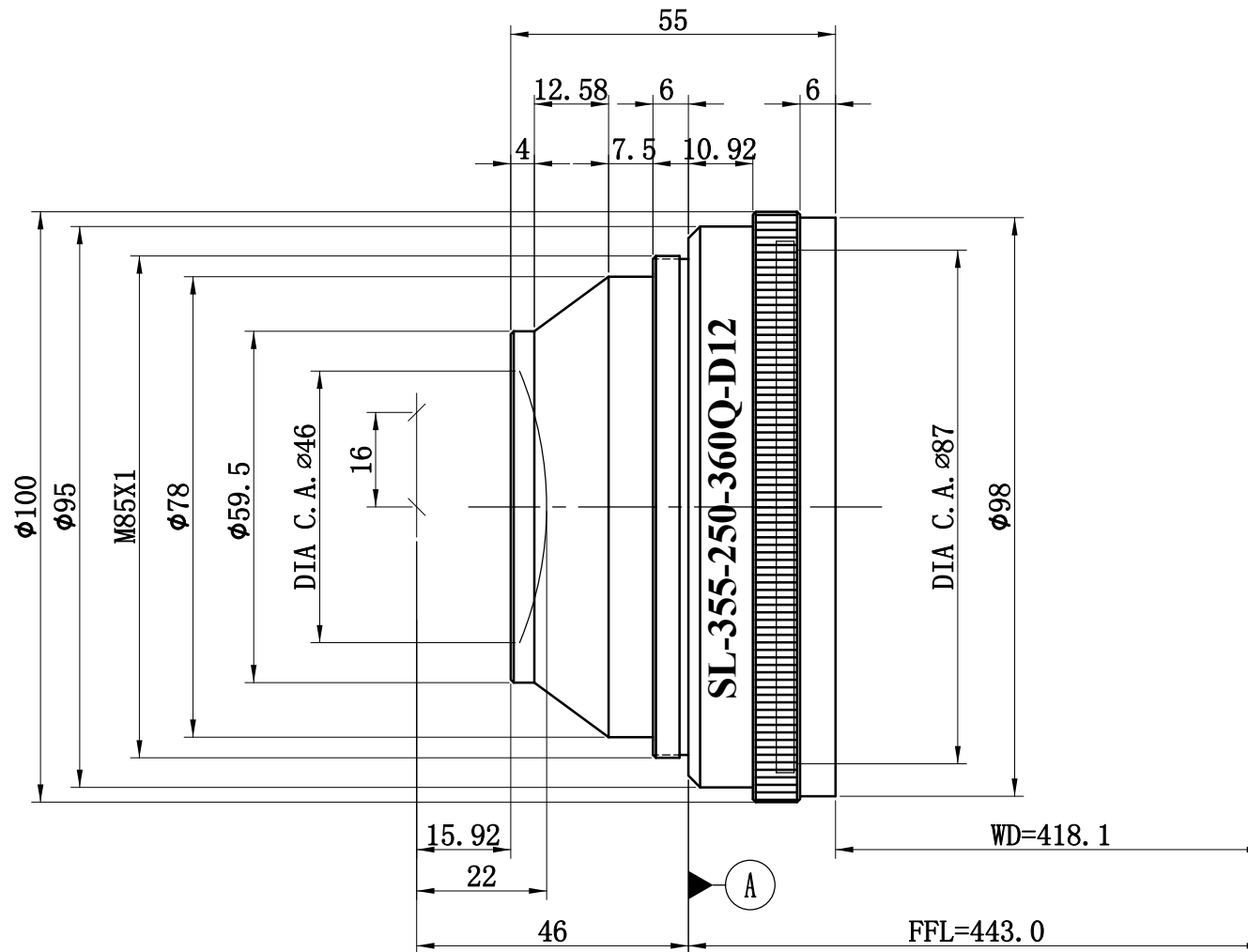
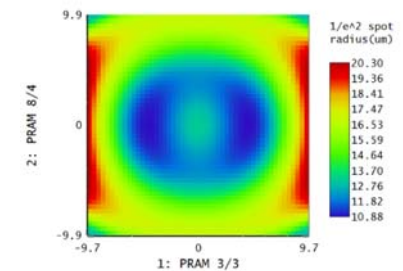


Focused back reflection distance from A:  
53.9; 67.6; 151.78; 152.5



REVISIONS			
REV	DATE	DESCRIPTION	APO
Specification			
Item NO.	SL-355-250-360Q-D12		
Wavelength	355nm		
EFL	360mm		
FFL	443.0mm		
WD	418.1mm		
Scan angle	±28deg		
Scan length	353mm		
Scan field	250mmx 250mm		
Input beam Dia(1/e2)	12mm		
M1-M2	16mm		
M2-lens center	22mm		
M2-mount edge	15.92mm		
Spot size range(1/e2)	20.8-40.6um		
Outer diameter	φ100mm		
Thread	M85x1		
Total length	55mm		
Weight	-		
Protective window	D90×T3		
Transmission	>95%		
Telecentricity	<14deg		
Reference Scan Head :	-		
EFL@546nm	379.09mm		



Remark: the spot size is simulation result, the actual spot size will be subject to material property and working condition etc.

PROPRIETARY AND CONFIDENTIAL THE INFORMATION CONTAINED IN THIS DRAWING IS THE SOLE PROPERTY OF WAVELENGTH OPTO-ELECTRONIC (S) PTE LTD. ANY REPRODUCTION IN PART OR AS A WHOLE WITHOUT THE WRITTEN PERMISSION OF WAVELENGTH OPTO-ELECTRONIC (S) PTE LTD. IS PROHIBITED.	TOLERANCES UNLESS SPECIFIED: 0.1	DRAWN	NAME	DATE	<b>Wavelength</b> Opto-Electronic(s) Pte Ltd	
	SURFACE: Black Anodize	CHECKED	DingWen	2016.5.12		
	MATERIAL: AL	<b>SL-355-250-360Q-D12</b>			<b>NJSL-436</b>	REV.
	UNIT: mm					A
	SCALE: 1:1.2				SHEET 1 OF 1	