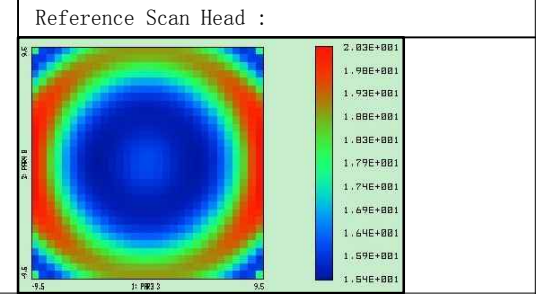


REVISIONS			
REV	DATE	DESCRIPTION	APPROVED
Specification			
Item NO.	SL-355-500-750-D15		
Wavelength	355nm		
EFL	750mm		
FFL	865.55mm		
WD	840.17mm		
Scan angle	±25deg		
Scan length	707mm		
Scan field	500mmx500mm		
Input beam EP(1/e2)	15mm		
M1-M2	16mm		
M2-lens center	22mm		
M2-mount edge	16.88mm		
* Spot size range(1/e2)	31~40um		
Outer diameter	90mm		
Thread	M85x1		
Total length	45mm		
Weight	—		
Protective window	D80xT3		
Transmission	>95%		
Telecentricity	<22deg		



Remark: the spot size is simulation result, the actual spot size will be subject to material property and working condition etc.

PROPRIETARY AND CONFIDENTIAL THE INFORMATION CONTAINED IN THIS DRAWING IS THE SOLE PROPERTY OF WAVELENGTH OPTO-ELECTRONIC(S) PTE LTD. ANY REPRODUCTION IN PART OR AS A WHOLE WITHOUT THE WRITTEN PERMISSION OF WAVELENGTH OPTO-ELECTRONIC(S) PTE LTD. IS PROHIBITED.	TOLERANCES UNLESS SPECIFIED: 0.1	NAME	DATE	WAVELENGTH	REV.
	SURFACE: Black Anodize	DRAWN	Yang Yong		
	MATERIAL: AL	CHECKED			NJSL-526
	UNIT: mm				
SCALE: 1:1					
		SL-355-500-750-D15			