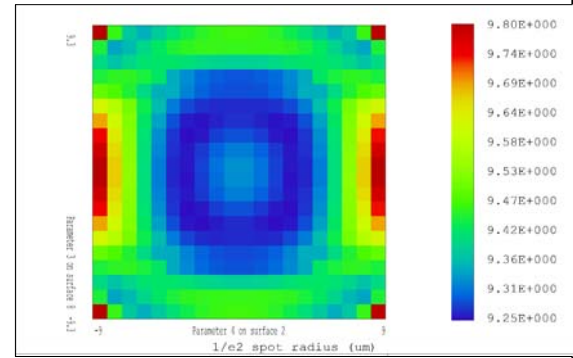


| REVISIONS               |                 |             |     |
|-------------------------|-----------------|-------------|-----|
| REV                     | DATE            | DESCRIPTION | APO |
|                         |                 |             |     |
| Specification           |                 |             |     |
| Item NO.                | SL-355-105-170Q |             |     |
| Wavelength              | 355nm           |             |     |
| EFL                     | 170mm           |             |     |
| BFL                     | 219.06mm        |             |     |
| WD                      | 216.06mm        |             |     |
| Scan angle              | ±27deg          |             |     |
| Scan length             | 148mm           |             |     |
| Scan field              | 105mmx105mm     |             |     |
| Input beam Dia(1/e2)    | 6mm             |             |     |
| M1-M2                   | 14mm            |             |     |
| M2-lens center          | 20mm            |             |     |
| M2-mount edge           | 13.72mm         |             |     |
| * Spot size range(1/e2) | 19-20um         |             |     |
| Outer diameter          | 89mm            |             |     |
| Thread                  | M55X1/M85x1     |             |     |
| Total length            | 50.9mm          |             |     |
| Protective window       | D76T2           |             |     |
| Transmission            | >94%            |             |     |
| Reference Scan Head :   |                 |             |     |



Remark: the spot size is simulation result, the actual spot size will be subject to material property and working condition etc.

|  |                                  |                 |         |                                      |              |            |
|--|----------------------------------|-----------------|---------|--------------------------------------|--------------|------------|
| PROPRIETARY AND CONFIDENTIAL THE INFORMATION CONTAINED IN THIS DRAWING IS THE SOLE PROPERTY OF WAVELENGTH OPTO-ELECTRONIC(S) PTE LTD. ANY REPRODUCTION IN PART OR AS A WHOLE WITHOUT THE WRITTEN PERMISSION OF WAVELENGTH OPTO-ELECTRONIC(S) PTE LTD. IS PROHIBITED. | TOLERANCES UNLESS SPECIFIED: 0.1 | NAME            | DATE    | <b>WAVELENGTH OPTO-ELECTRONIC(S)</b> |              |            |
|  | SURFACE: Black Anodize           | DRAWN           | DingWen |                                      |              | 28-07-2017 |
|  | MATERIAL: AL                     | CHECKED         |         |                                      | SL176        | REV O      |
|  | UNIT: mm                         | SL-355-105-170Q |         |                                      | SHEET 1 OF 1 |            |
|  | SCALE: 1:1                       |                 |         |                                      |              |            |