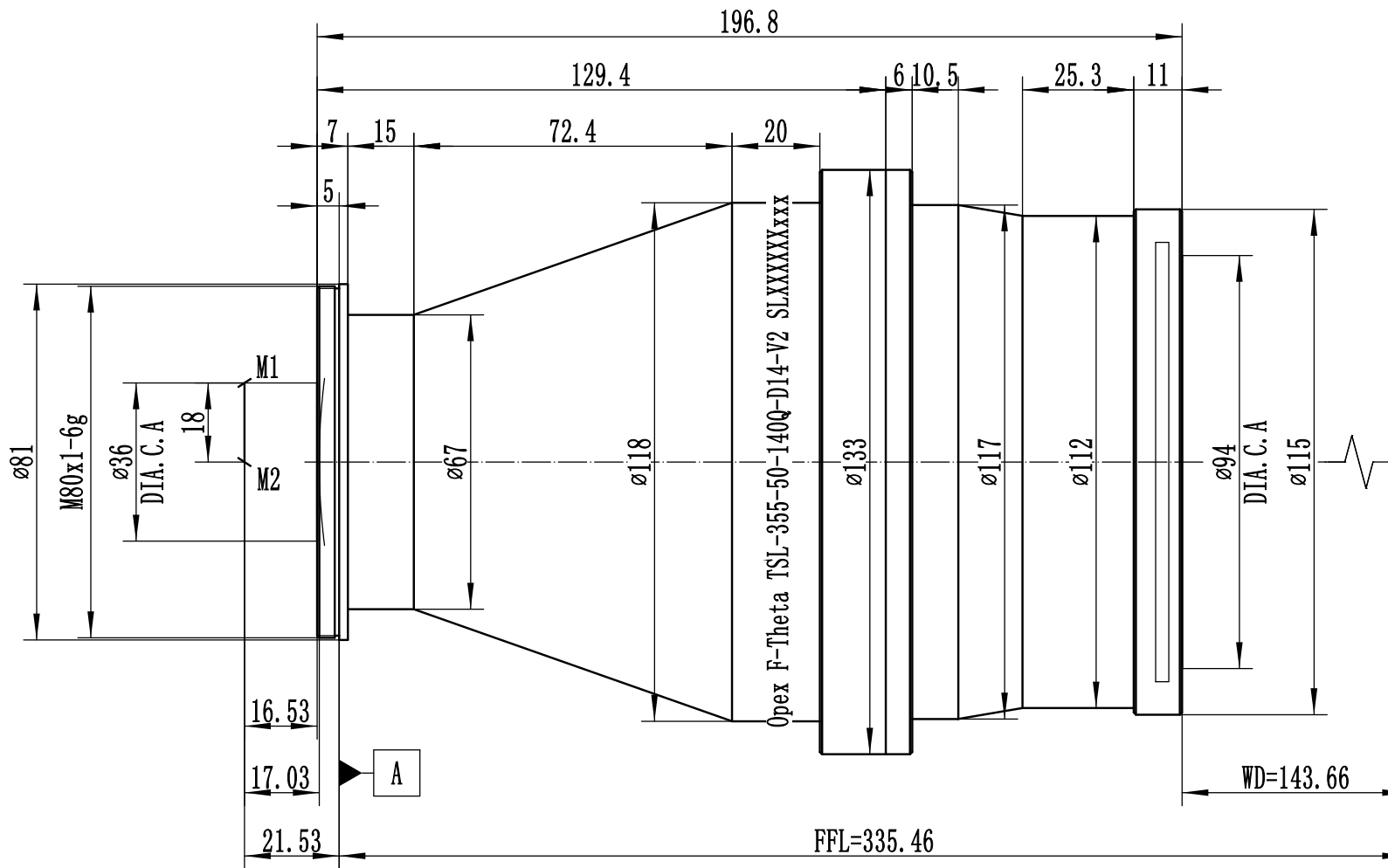
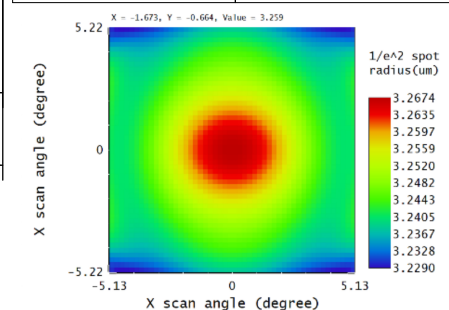


Focused back reflection distance from A:
10.1



Remark: the spot size is simulation result, the actual spot size will be subject to material property and working condition etc.

REVISIONS			
REV	DATE	DESCRIPTION	APO
Specification			
Item NO.	TSL-355-50-140Q-D14-V2		
Wavelength	355nm		
EFL	140mm		
FFL	335.46mm		
WD	143.66mm		
Scan angle	±14.6deg		
Scan length	70.7mm		
Scan field	50mmx50mm		
Input beam Dia(1/e2)	14mm		
M1-M2	18mm		
M2-lens center	17.03mm		
M2-mount edge	16.53mm		
Spot size range(1/e2)	6.45-6.53um		
Outer diameter	Φ133mm		
Thread	M80x1		
Total length	196.8mm		
Weight	-		
Protective window	D100T3		
Transmission	>92%		
Telecentricity	<1deg		
Reference Scan Head :	SS-IV-15		
EFL@546nm	148.87mm		



PROPRIETARY AND CONFIDENTIAL THE INFORMATION CONTAINED IN THIS DRAWING IS THE SOLE PROPERTY OF WAVELENGTH OPTO-ELECTRONIC (S) PTE LTD. ANY REPRODUCTION IN PART OR AS A WHOLE WITHOUT THE WRITTEN PERMISSION OF WAVELENGTH OPTO-ELECTRONIC (S) PTE LTD. IS PROHIBITED.	TOLERANCES UNLESS SPECIFIED: 0.1	NAME	DATE	Wavelength Opto-Electronic(s) Pte Ltd	
	SURFACE:	DRAWN	ZSW		23.8
	MATERIAL: AL	CHECKED			TSL-355-50-140Q-D14-V2 NJSL-1351 SHEET 1 OF 1
	UNIT: mm			REV. A	
	SCALE: 1:1.5				